



LIFT FOILS

CATALOG





TABLE OF CONTENTS

| | | |
|-----------|---|-----------------------------|
| 03 | — | ABOUT LIFT |
| 04 | — | A NOTE FROM NICK LEASON |
| 05 | — | THE LIFT eFOIL |
| 07 | — | eFOILS |
| | | 09 LIFT4 |
| | | 15 LIFT3 F |
| | | 18 ACCESSORIES |
| | | 19 NEW APP |
| 20 | — | WINGS LINEUP |
| | | 22 FRONT WINGS |
| | | 24 HIGH ASPECT WINGS |
| | | 26 BACK WINGS |
| 27 | — | MASTS |
| 29 | — | CLASSIC FOILS |
| | | 30 SURF FOIL BOARDS |
| | | 31 WIND FOIL BOARDS |
| 32 | — | RECENT PRESS |
| 33 | — | FLY BEFORE YOU BUY |
| 34 | — | CONTACT US |



ABOUT LIFT

Lift Foils is the original eFoil creator and the leading innovator in top-performing hydrofoil technology.

Family-run and with over a decade of experience, our company is made up of engineers who ride what they make.

This keeps us honest on the limitless quest for the next frontier in watersports.

All of our products are in stock and available to ship worldwide.

[WATCH THE VIDEO](#)

A NOTE FROM LIFT FOILS FOUNDER NICK LEASON

To those close to the foiling community, it may seem we've entered the mainstream, but I believe that the sport is just getting started. We're finally starting to see small groups of surfers adopt the foil for their small wave needs. In wind sports, wing foiling is officially taking over. Kitesurfers are making a complete move, and windsurfers who haven't contemplated rigging a sail in the last 20 years are now coming out of retirement to start winging on a foil board. In the world of electric, more and more eFoils are starting to pop up in the wild and as houseboat owners cruise around with multiple outdated jet skis on the aft deck, they ask themselves, "Why don't we have one of those?" The first person foiling was a kook, when it was two people they were weird, and now, with gangs of foilers at local breaks and WhatsApp groups excitedly messaging each other about one-foot surf, we have ourselves a movement. If you look closely at the strange trends, you can start to visualize the evolution of a new sport with multiple segments.

I see two advancement trends in foiling. The first is the early advocates, the ones who have been on the edge of the sport for years, who are going to achieve levels of mastery that are simply beyond what we can even comprehend today. I see it now with riders we work with at Lift. Some are only a few years into foiling, some are still in high school, but they're doing flips and tackling waves that seemed insurmountable to pioneers just a year ago. I firmly believe these riders are going to be flying out of barrels, riding huge waves at incredible speeds, and doing acrobatics similar to what we see in the world of snowboarding. Have a look at what people achieve behind a boat on an Air Chair and then combine that with fearless young surfers on large waves, light equipment, and foot straps. These young guns may even adopt an eFoil as the tool needed to get them launched into such surf.

The second is that we're going to see the infrastructure building quickly for further mainstream adoption, education, and enablement of new riders in all types of foiling. This is going to mean more brands jumping into the sport, more schools and lesson opportunities, and an increased desire from people of all skill levels to try foiling. The multiple branches of foiling—surf, SUP, wake, kite, wingdings, eFoils—are what will create so much attention and what will offer an avenue for everyone. We've signed up hundreds of schools and rental areas to represent and showcase Lift eFoils in the last two years alone, and that speaks to the excitement that's going to continue across all areas of the sport.

Foil designs and equipment will continue to evolve. Wing designs will start to be refined for more specific applications. Just as you have different surfboards for different kinds of surfing, the same is true of hydrofoil designs. I think the most exciting will be the adoption of smaller wings as foilers discover an incredible amount of speed and maneuverability in more powerful surf. Glider wings will allow for the endless riding of small waves and the ability to tap into open ocean swells and chop. It will no longer be people riding at specific breaks but instead riding their entire coastline.

Winging will allow for a new wave of excitement in the world of sailing as new people take an interest once again in the ancient art of riding the wind. What's most exciting is that non-surfers will learn to wing foil and surf open ocean swells in a matter of a few lessons—something that traditional surfers have never dreamed of. Skilled sailers will create rigid wings (true foils) that allow them to reach new speeds and a whole new category of racing. The world of electric foiling is endless and new crafts will appear that will excite just about everyone. The combination of tech and tradition will soon meld into new levels of the sport. Just wait and see what we have in store for you.

At the end of the day, it's no longer a question of whether or not foiling will become a mainstream sport; we're past that phase. It's a question of how far we can take it. I have so many ideas flowing that as soon as I finish one new design, I'm seeing three more in front of it. The potential is crazy, and as the community continues to expand, everyone will contribute more and more to the development of the sport. That's the most exciting part of it all: community, and finding new levels of stoke with your peers, and sharing new ideas that shape the next level of surfing for everyone.

—Nick Leason, CEO and Founder of Lift Foils

© *Foiling Magazine*, 2020

The background of the advertisement is a wide-angle photograph of two women riding eFoils on the ocean. The scene is set at sunset or sunrise, with a sky filled with soft, golden light and scattered clouds. The woman on the left is wearing a dark, patterned one-piece swimsuit and is riding a light-colored eFoil. The woman on the right is wearing a green bikini and is riding a red eFoil. Both women are standing on their respective boards, which are elevated above the water's surface by a thin foil. The water is dark blue with gentle ripples. In the distance, a low mountain range is visible on the horizon.

THE **LIFT**eFOIL

The Lift eFoil leverages advances in lithium battery technology and wireless communication to create an experience that's a mix of surfing, flying, and deep-powder snowboarding.

A powerful electric motor, a state-of-the-art battery, and high-performance carbon fiber boards, foils, and wings combine to create the world's smallest watercraft. Riders of all athletic capabilities can glide above any body of water, without needing to be propelled by wind or waves.

EXPERIENCE THE POWER OF **FLIGHT**

LIFT eFOIL

PARTS & COMPONENTS



HAND CONTROLLER

Our patented Bluetooth hand controller gives the rider complete control without the constraints of attachment for a more organic, effortless ride.

OUR CONTROLLER:

- offers the most refined throttle design possible for control at your fingertips.
- uses the most powerful wireless Bluetooth technology available.
- is completely waterproof and floats.
- features automatic power shut-off if the throttle is released or if it is submerged in water.
- has a display screen with battery charge levels, power settings and alerts.

MOTOR

Our motor is sleek and hydrodynamic for reduced drag in the water. Its design is a direct drive with minimal mechanical components (no gearbox needed) and offers maximum torque and response without making any noise.

PROPULSION SYSTEM

Our propulsion system is the most powerful and durable on the market. It's liquid-cooled and built to run all day, every day. Cruise calmly or tow your friends. Whatever you're looking to do, we've got you covered.



CARBON FIBER WINGS

Customize your ride experience with your choice of front and back wings, all artfully crafted for superior strength and performance. Mix and match to dial in your perfect setup for your desired ride experience.



BATTERY

Exclusive to Lift, our redesigned batteries provide comprehensive safety features and deliver peak performance with maximum durability. To ensure a fast and efficient charge, every Lift eFoil includes our premium 1200W battery charger.



PREMIUM CASES

Our eFoils ship with cases and bags for safe transport and to keep your investment protected while not in use.

eFOILS LINEUP





AT **LIFT** FOILS,

our goal has always been to get as many people as possible to experience the unique and magical feeling of flying over water. Every new generation of eFoil stays true to this goal, not only by continuously improving, but also by elevating every part of the foiling experience.

The LIFT4 was designed to prioritize three main qualities: style, longevity, and performance. After five years of extensive usage and of acquiring feedback from more than 15,000 riders, we've updated and reworked the majority of our components to perfect your ride and create an eFoil that will revolutionize how we interact with water and with nature.

LIFT4 eFOIL

HERE'S WHAT'S NEW FOR THE LIFT4

QUIET RIDE TECHNOLOGY

We've introduced our brand new LIFT4 eBox with Quiet Ride Technology that reduces any acoustic noise while eFoiling down to near silence so that when you fly it's just you and Mother Nature.

WINGS

The LIFT4 launches with our new Camber Pro front wings, our smoothest eFoil specific wings to date. The Camber Pro series is designed to perform and provide stability at high speeds, giving riders a greater feeling of control.

DETAILS, PERFECTED

The LIFT4 features many details we've updated based on input from our riders and community. Our battery features a new ruggedized housing with feet, we've upgraded our latches to a proprietary carbon fiber design that automatically regulate pressure, and our hand controller has been ruggedized to feature more data options.

[WATCH THE VIDEO](#)



LIFT GEN4 BATTERIES

HERE'S WHAT'S NEW FOR THE LIFT BATTERIES

GEN4 BATTERY UPDATES

This latest iteration of the Lift eFoil battery has been redesigned inside and out, with longevity and safety as our top priorities. This includes restructured and optimized high-performance cells and an all-new battery management system (BMS) that significantly lengthens ride times, decreases charge times, and lessens the maintenance needed whether in use or in storage. We've also reduced the overall battery weight!

The battery enclosure features enhanced ergonomics, improved hardware, and robust, lab-tested shock-absorbing material to ensure they are safe, easy to use, and built to last. The Gen4 batteries are compatible with any generation of Lift eFoil, making them an ideal upgrade to your eFoil setup.

RIDE TIMES

GEN4 LIGHT BATTERY: UP TO 1.5 HOURS

GEN4 FULL RANGE BATTERY: UP TO 2.5 HOURS

CHARGE TIMES

GEN4 LIGHT BATTERY: 30 MINUTES

GEN4 FULL RANGE BATTERY: 50 MINUTES



LIFT4 eFOIL SIZES



4'2 PRO

SPECS:

DIMENSIONS: 4'2" X 23.5" X 59 LITERS

BOARD WEIGHT: 23.5 LBS. (10.7 KG)

eFOIL WEIGHT W/ LIGHT BATTERY: 57.3 LBS. (26 KG)

eFOIL WEIGHT W/ FULL RANGE BATTERY: 64.7 LBS. (29.3 KG)

The LIFT4 4'2 Pro is the pinnacle of the sport. The compact size makes you feel like you're flying on nothing at all, and the response in its carve is the most liberating feeling you can have on the water.

This is the lightest board in the lineup, and really easy to handle for transport and making carves in the water.

WING SUGGESTIONS:

- The 160 Camber Pro offers a sporty, fast ride and pairs great with our 4'2.
- The 210 Camber Pro has more surface area which equates to increased stability while riding.
- Surf V2s provide a lot of lift and stability, making them a good option for new or heavier riders. Any of the Surf V2s pair with our 4'2, but we like the 150 and 200 Surf V2.
- Back Wings: The 36 Glide provides plenty of turning capability. The 46 Glide offers more pitch stability for a slightly more relaxed ride.

AVAILABLE COLORS:



CARBON
BLACK

ARCTIC
WHITE

STEEL
BLUE

LIME
LIGHT

LIFT4 eFOIL SIZES



4'9 SPORT

SPECS:

DIMENSIONS: 4'9" X 25" X 70 LITERS

BOARD WEIGHT: 25.5 LBS. (11.6 KG)

eFOIL WEIGHT W/ LIGHT BATTERY: 59.3 LBS. (26.9 KG)

eFOIL WEIGHT W/ FULL RANGE BATTERY: 66.7 LBS. (30.3 KG)

The LIFT4 4'9 offers the ideal balance between stability and performance. If you want a board that is going to allow you to grow your skills as a foiler and still be able to share it with friends and family, look no further.

Our 4'9 Sport is the perfect size and shape for just about all of your foiling needs and offers easy transport and handling.

WING SUGGESTIONS:

- The 210 Camber Pro flies beautifully at a slightly higher speed bracket, and carves turns with ease.
- The 200 Surf V2 provides more lift at lower speeds, making it a great option for riders new to eFoiling.
- Back Wings: The 36 Glide provides plenty of turning capability. The 46 Glide offers more pitch stability for a slightly more relaxed ride.

AVAILABLE COLORS:



CARBON
BLACK

ARCTIC
WHITE

STEEL
BLUE

LIME
LIGHT

LIFT4 eFOIL SIZES



5'4 CRUISER

SPECS:

DIMENSIONS: 5'4" X 28" X 88 LITERS

BOARD WEIGHT: 28.9 LBS. (13.1 KG)

eFOIL WEIGHT W/ LIGHT BATTERY: 62.7 LBS. (28.4 KG)

eFOIL WEIGHT W/ FULL RANGE BATTERY: 70.1 LBS. (31.8 KG)

The LIFT4 5'4 is still short, but offers all the stability that any rider will need.

When up in the air, the 5'4 carves a beautiful turn that locks in with confidence. If you're new to watersports and you want to share the eFoil experience with friends and family, this is a great option that will offer absolute success.

WING SUGGESTIONS:

- Try the 270 Camber Pro Front Wing if you prefer a slower, more stable ride or are a larger rider.
- The 200 Surf V2 provides more lift at lower speeds, and it gives you a wing to grow into.
- Back Wings: The 46 Glide offers lots of pitch stability for a more relaxed ride and pairs nicely with the 270 Camber Pro. The 38 and 48 Surf V2s are great options for even more stability.

AVAILABLE COLORS:



CARBON
BLACK

ARCTIC
WHITE

STEEL
BLUE

LIME
LIGHT

LIFT4 eFOIL METALLICS

Lift Foils metallics are hand painted in our factory in Puerto Rico in standout colors.
Pick your perfect color on any LIFT4 board size.

The lineup includes Emerald Mist, Aurora Gold, Cayenne Red, Race Red, Sapphire Surf,
Daybreak Blue, Ultra Violet, and Lilac Pearl.



[WATCH THE VIDEO](#)



THE NEW LIFT3 F

Our ultra easy-to-ride LIFT3 F eFoil has been updated so you can fly longer and smoother with a durable, high-quality eFoil at a new low price.

LIFT3 F CONSTRUCTION

FIBERGLASS BOARD

The LIFT3 F features a proprietary fiberglass blend crafted by Lift's engineers into the perfect aerodynamic shape for hydrofoiling.

PRECISION MACHINED MAST

The LIFT3 F also includes a precision-machined aluminum mast that's especially helpful for newer riders — delivering a more stable and responsive experience than the LIFT4 carbon fiber mast.

THE FRP PROPELLER

The LIFT3 F is the first Lift eFoil with our new Fiber Reinforced Polymer (FRP) propeller for increased efficiency, reduced drag, and dampened vibration from the tapered propeller hub design.

[WATCH THE VIDEO](#)

NEW
LIFT3 F
SIZES



4'9 SPORT

SPECS:

DIMENSIONS: 4'9" X 25" X 70 LITERS

BOARD WEIGHT: 29.5 LBS. (13.4 KG)

eFOIL WEIGHT W/ LIGHT BATTERY: 66 LBS. (30 KG)

eFOIL WEIGHT W/ FULL RANGE BATTERY: 73.5 LBS. (33.3 KG)

Smooth and easy to ride, this is our go-to eFoil recommendation for anyone new to eFoiling.

The LIFT3 F is ultra-stable, yet small enough to improve your skills to take full advantage of the eFoil's potential. It's the perfect eFoil for new riders as well as the ideal choice to share with friends, family and fellow eFoilers.

For the most transportable LIFT3 F setup, choose the 4'9 with our Light Battery.

WING SUGGESTIONS:

- Select the 200 Surf V2 for a faster, more lively ride.
- The 250 Surf V2 provides extra stability and low-speed rides for larger eFoilers and offers an easier experience for new riders.

AVAILABLE COLORS:



SUNSET
PEACH

ICEBERG
BLUE

NEW
LIFT3 F
SIZES



5'4 CRUISER

SPECS:

DIMENSIONS: 5'4" X 28" X 88 LITERS

BOARD WEIGHT: 34.5 LBS. (15.6 KG)

eFOIL WEIGHT W/ LIGHT BATTERY: 71 LBS. (32.2 KG)

eFOIL WEIGHT W/ FULL RANGE BATTERY: 78.5 LBS. (35.6 KG)

The 5'4 LIFT3 F is the ideal size for casual eFoiling with the stability to get anyone up and riding. If you're new to eFoiling and want our easiest, most affordable option, this is the eFoil for you.

WING SUGGESTIONS:

- The 200 Surf V2 offers versatility in your ride style.
- The 250 Surf V2 is perfect for an effortless, ultra-stable ride that keeps you cruising over the water.

AVAILABLE COLORS:



SUNSET
PEACH

ICEBERG
BLUE

LIFT eFOIL ACCESSORIES



ELITE BOARD BAG

The Lift Elite Board Bag provides protection and an exceptionally easy-to-use experience when transporting your eFoil.

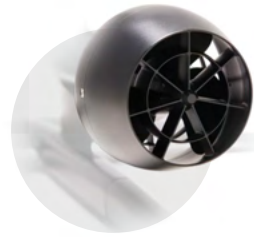
Made from a proprietary, fully recyclable fabric manufactured by Paua, the Board Bag is lightweight, collapsible, and impact and water resistant.



ZARGES BATTERY CASE

Protect your Lift eFoil batteries with a durable, fire-resistant case featuring an aluminum shell and linings that suppress ignition and contain heat.

Zarges cases feature secure latches, stacking corners, three fully-welded aluminum profile frames, and are easy to load and unload.



LIFT JET

The innovative Lift Jet is the latest addition to the Lift propulsion lineup and delivers an unparalleled eFoil experience with exceptional versatility no matter where you ride.

The Lift Jet features a fully enclosed impeller for maximum safety, and the design minimizes drag while providing smoother acceleration for a more responsive, surfy ride.



LIFT CONNECT SYSTEM PROPELLER KITS

Upgrade your Lift eFoil with the Lift Connect System (LCS) propeller kit, featuring an innovative click-and-lock mechanism for easy interchanging of propeller components, without the need for tools.

LCS propellers are designed with a tapered hub and increased pitch angle on the blades for increased efficiency, less drag and optimal performance.



ELITE HAND CONTROLLER

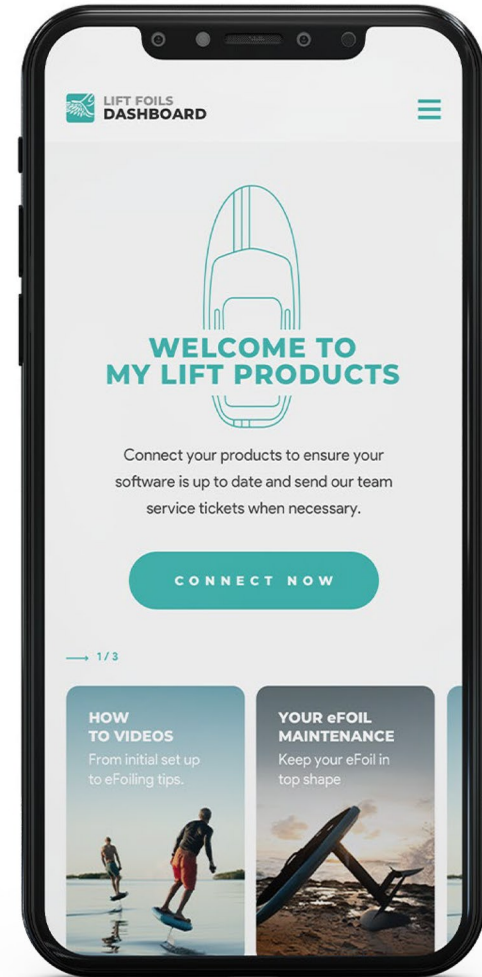
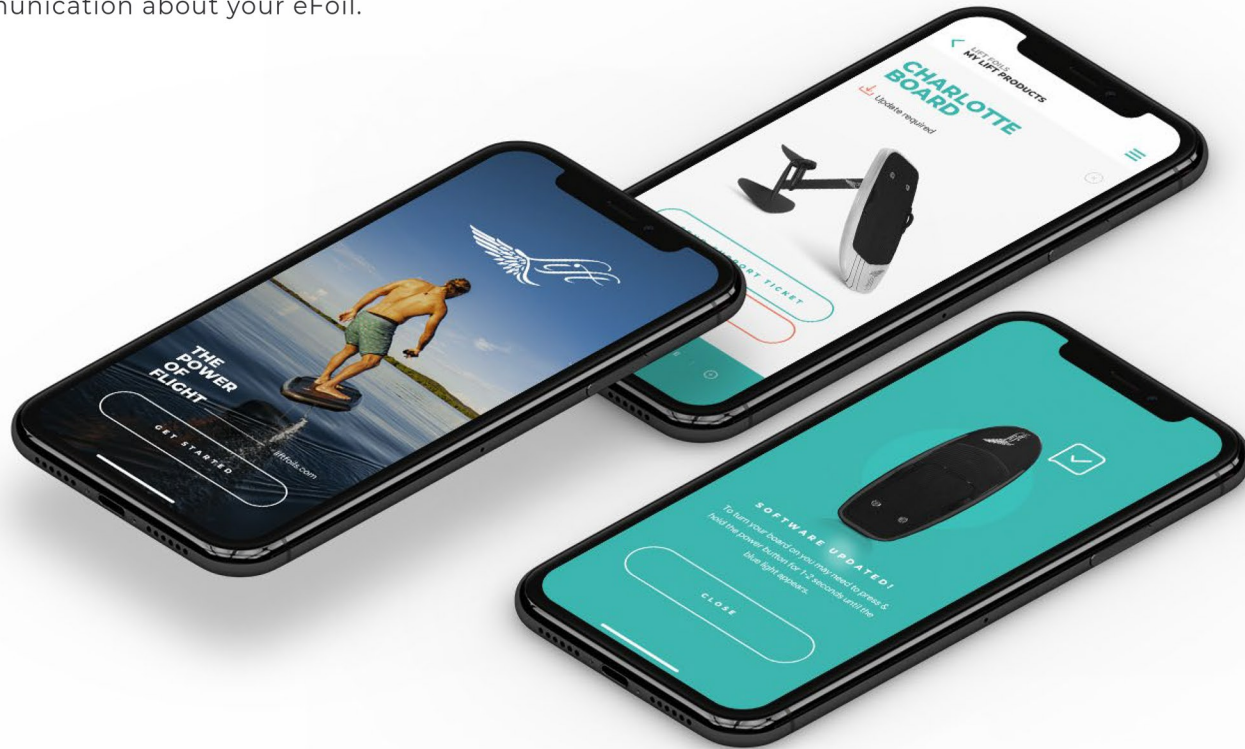
Our Elite Hand Controller is engineered to put the freedom of foiling in the palm of your hand. This controller features premium materials and thoughtful design inside and out.

The user interface is GPS driven, and the full-color display enables you to easily track your rides.

Rechargeable and ready to pair with your Lift eFoil, the Elite Hand Controller delivers a next-generation experience.

LIFT FOILS APP

Introducing our redesigned app for easy setup, updates, and communication about your eFoil.



WINGS

LINEUP



LIFT WINGS

LINEUP

We take pride in the performance of our wings — it's in our DNA. With more than 15 years of refinement, our finely-tuned wings deliver the ultimate flying experience. Constructed from carbon fiber, our wings are light, stiff and built to last a lifetime.



SURF V2 WINGS

LINEUP

The Surf V2 wings are a staple of our lineup and come standard on the LIFT3 F eFoil. These wings offer tremendous stability and ease of use at low speeds. But don't let that fool you, they can also roll into a hard carve like nothing else can.



100 SURF V2

SPECS:

ASPECT RATIO: 6.3
SURFACE AREA: 100 IN² (645 CM²)
WINGSPAN: 25" (64 CM)



150 SURF V2

SPECS:

ASPECT RATIO: 6.5
SURFACE AREA: 150 IN² (965 CM²)
WINGSPAN: 30" (76 CM)



200 SURF V2

SPECS:

ASPECT RATIO: 5.4
SURFACE AREA: 200 IN² (1290 CM²)
WINGSPAN: 32.5" (83 CM)



250 SURF V2

SPECS:

ASPECT RATIO: 4.6
SURFACE AREA: 250 IN² (1610 CM²)
WINGSPAN: 34" (86 CM)

CAMBER PRO WINGS

LINEUP

The Camber Pro is the latest series addition to our wing lineup. Designed specifically for the eFoil, these wings are quick and light on the water and are made to fly in a slightly higher speed bracket. They ride smooth through turns without too much lift so you feel fast, nimble and in control.



160 CAMBER PRO

SPECS:

ASPECT RATIO: 6.2
SURFACE AREA: 160 IN² (1032 CM²)
WINGSPAN: 31.5" (80 CM)



210 CAMBER PRO

SPECS:

ASPECT RATIO: 5.3
SURFACE AREA: 210 IN² (1355 CM²)
WINGSPAN: 33.5" (85 CM)



270 CAMBER PRO

SPECS:

ASPECT RATIO: 4.5
SURFACE AREA: 270 IN² (1742 CM²)
WINGSPAN: 35" (89 CM)

HIGH ASPECT WINGS

LINEUP

The High Aspect wings provide unmatched efficiency and glide. Incredible for winging, downwinding, and extending your eFoil's battery life, these wings are a must-have in every quiver.



70 HIGH ASPECT

SPECS:

ASPECT RATIO: 12.1
SURFACE AREA: 70 IN² (452 CM²)
WINGSPAN: 29.5" (75 CM)



90 HIGH ASPECT

SPECS:

ASPECT RATIO: 11.0
SURFACE AREA: 90 IN² (581 CM²)
WINGSPAN: 31.5" (80 CM)



110 HIGH ASPECT X

SPECS:

ASPECT RATIO: 13.1
SURFACE AREA: 110 IN² (710 CM²)
WINGSPAN: 38" (97 CM)



120 HIGH ASPECT

SPECS:

ASPECT RATIO: 10.2
SURFACE AREA: 120 IN² (775 CM²)
WINGSPAN: 35" (89 CM)



150 HIGH ASPECT X

SPECS:

ASPECT RATIO: 10.1
SURFACE AREA: 150 IN² (970 CM²)
WINGSPAN: 39" (99 CM)



170 HIGH ASPECT

SPECS:

ASPECT RATIO: 8.1
SURFACE AREA: 170 IN² (1095 CM²)
WINGSPAN: 37" (94 CM)



200 HIGH ASPECT

SPECS:

ASPECT RATIO: 6.8
SURFACE AREA: 200 IN² (1290 CM²)
WINGSPAN: 37" (94 CM)

SPECIALTY WINGS

When the world's best surfers come to us wanting to ride the globe's largest waves, we simply get to work and build foils that conquer monsters.



72 LCX

SPECS:

ASPECT RATIO: 12.1

SURFACE AREA: 72 IN² (465 CM²)

WINGSPAN: 24" (61 CM)



60 SURF V2

SPECS:

ASPECT RATIO: 6.0

SURFACE AREA: 60 IN² (390 CM²)

WINGSPAN: 22" (56 CM)

LIFT BACK WINGS

LINEUP

SURF V2 BACK WINGS

The ultimate stability. Easy and predictable for all levels of riders



38 SURF V2

SPECS:

SURFACE AREA: 38 IN² (245 CM²)
FUSELAGE LENGTH: 11.6"



48 SURF V2

SPECS:

SURFACE AREA: 48 IN² (310 CM²)
FUSELAGE LENGTH: 12.3"

GLIDE BACK WINGS

Maximized efficiency. As the name indicates, these back wings provide incredible glide. Adding in the extended fuselage length, the Glide creates dependable stability in all conditions



25 GLIDE

SPECS:

SURFACE AREA: 25 IN² (161 CM²)
FUSELAGE LENGTH: 10.6"



32 GLIDE

SPECS:

SURFACE AREA: 32 IN² (206 CM²)
FUSELAGE LENGTH: 11.2"



36 GLIDE

SPECS:

SURFACE AREA: 36 IN² (232 CM²)
FUSELAGE LENGTH: 11.4" (29 CM)



46 GLIDE

SPECS:

SURFACE AREA: 46 IN² (297 CM²)
FUSELAGE LENGTH: 11.8" (30 CM)

CARVE BACK WINGS

Razor sharp turning. Unleash your foils turning capabilities. The short fuselage length and positive angle gives all the ability in the world to bank turns you never thought possible



20 CARVE

SPECS:

SURFACE AREA: 20 IN² (161 CM²)
FUSELAGE LENGTH: 10.6"



26 CARVE

SPECS:

SURFACE AREA: 26 IN² (168 CM²)
FUSELAGE LENGTH: 8.1"



33 CARVE

SPECS:

SURFACE AREA: 33 IN² (213 CM²)
FUSELAGE LENGTH: 8.8"

WING FUSELAGE EXTENDER

Our 3" fuselage extender allows you to lengthen the fuselage length, and provide any of our back wings with increased pitch stability



CLASSIC MAST SERIES

LINEUP

Our masts come in four sizes. Each mast is all carbon fiber and they perform better than ever. The masts may not look too different from previous generations, but we've fine-tuned the construction with a new proprietary premium carbon fiber blend for improved control and response.

We've also dialed in the flex patterns of the materials. In our decade of creating foils, this process has emerged as the key to achieving the ultimate ride. We compare it to using higher quality wood in a musical instrument.

This generation of Lift masts offers a truly premium ride experience. Materials like aluminum feel dead when you carve a turn, and more rudimentary carbon fiber just isn't the same.



24"
CLASSIC MAST



28"
CLASSIC MAST



32"
CLASSIC MAST



36"
CLASSIC MAST

X2 MAST SERIES

LINEUP

The X2 Mast Series is for surf foil riders who desire the ultimate in mast stiffness and control.

Built with our high-modulus carbon fiber construction, we've fine-tuned the geometry to provide increased stiffness and flex control.

The slightly thicker profile of this mast provides 2X the stiffness of our Classic Mast series. The tradeoff is minimally increased drag.

Heavier riders will appreciate the added control and responsiveness, especially when riding wide wingspan foils.



28"
X2 MAST



32"
X2 MAST



36"
X2 MAST

FOIL BOARDS

We're excited to introduce our long-awaited foil boards. This is our largest lineup to date, offering eight boards across two categories with each board available in two colorways.

Ultra-tough, yet lightweight, Lift boards are built to last. We expect your Lift foil board to be a part of your foiling quiver for more than a decade.

Lift boards are ready to ride with no extras or installation needed. Every foil board is shipped with a premium EVA deck pad pre-installed and a protective carrying case that lasts the lifetime of the board.

Our boards are fine-tuned and designed to perform flawlessly with Lift wings and masts.



SURF FOIL BOARDS

LINEUP

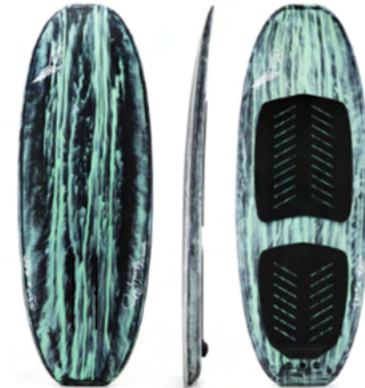
Foil boards created to carve through the open ocean swells or behind a boat — ranging from 4'0 to 5'0.



4'0" X 30L
SURF/WAKE/TOW FOIL BOARD



4'6" X 34L
SURF FOIL BOARD



5'0" X 42L
SURF FOIL BOARD

AVAILABLE COLORS:



CARBON
BLACK

MINT
CHOCOLATE
RIP

WIND FOIL BOARDS

LINEUP

Foil boards designed to harness the power of wind and water. Wind boards are interchangeable as high-volume surf foil boards, giving you multiple options in one board.



4'0" X 26L
KITE FOIL BOARD



4'4" X 44L
WING FOIL BOARD



4'6" X 55L
WING FOIL BOARD



4'10" X 75L
WING FOIL BOARD



5'2" X 105L
WING FOIL BOARD

AVAILABLE COLORS:



CARBON
BLACK

MINT
CHOCOLATE
RIP

RECENT PRESS

The New York Times

"[The eFoil] was brought to market by Nick Leason, an engineer and avid surfer in Puerto Rico. Technology from smartphones, electric vehicles and drones was used to create a remote-controlled board that could fly over the water without wind or waves."

—New York Times

FINANCIAL TIMES

"[It's] magic. I always describe [eFoiling] as flying without the consequences of crashing."

— Laird Hamilton, Financial Times, "How to Spend It"

goop

"Magic carpet meets surfboard."

—Goop

San Francisco Chronicle

"It feels both revolutionary and like a natural outgrowth of our broader shift toward personalized, battery-powered transportation... It's like riding a warm knife edge through butter. Suddenly you're floating peacefully over a beautiful lake, relaxed enough to notice the surrounding trees and mountains."

—San Francisco Chronicle

MAXIM

"All our dreams are becoming reality. NEED."

—Maxim

BUSINESS INSIDER

"It's easy to learn and ridiculously user-friendly . . . It's magical up on that hydrofoil."

— Business Insider

THE SUNDAY TIMES

"[T]he surfboard Back to the Future's Marty McFly might have ridden... It's magical."

—The Sunday Times

BARSTOOL[®] STORE

"...easily the most fun I've had all summer."

—Barstool Sports

CNN Travel

"This is unlike any other surfboard."

—CNN Travel

VANITY FAIR

"The hot new trend in the oceans around Silicon Valley..."

—Vanity Fair

"A tumultuous year hasn't put a stop to innovation... Fancy a surfboard that flies over the water? Then take a look at the Lift eFoil..."

—Vanity Fair UK

NBC Sports NETWORK

"If you haven't tried [the eFoil], you really need to...This is my new favorite thing."

—NBC Sports

FLY BEFORE YOU BUY

If you want to try a Lift eFoil, we have the world's largest partner network for lessons and demos, with over 300 affiliate locations around the world.

You can check out the experience for yourself at many of the world's most idyllic places.



Search our global network of Lift Foils representatives to test our eFoils and experience flight above water.

FLY BEFORE YOU BUY >



LIFTFOILS.COM

info@liftfoils.com

197 Carretera #459
Aguadilla, PR 00603

Phone:
+1 (787)690-6198

@LiftFoils

